

SHANTUI

DH24

CRAWLER DOZER



- . Engine Model
- . Net Power
- . Operating Weight
- . SEMI U Blade

Weichai WD12G250E202
167kW (224hp)/2200rpm
26466kg
6.5m³

Linde Hydrostatic Travel Drive
electronic control

DH24 SPECIFICATIONS

ENGINE

Engine	Weichai WD12G250E202
Emission	EURO 2
Rated revolution	2100 rpm
Gross power	185 kW (240 hp)*
Net power	167 kW (224 hp)
Displacement	11,596 L
Max. torque	1200 Nm @ 1300-1400 rpm
Cooling System	Mechanical fan
Number of cylinder - bore x stroke	6 - 126 x 155 mm
Minimum fuel consumption	198 g/kW.h

DRIVE SYSTEM

Drive system	Independent dual-circuit electric control hydrostatic drive, intelligent matching of speed-load, stepless variable speed, mono-lever control of travel, speed and steering; steering with load pivot steering, work flexibly, high efficiency, easy for maintenance
--------------	---

System overflow pressure	45000 kPa
Traveling speed	Forward 0~11 km/h Backward 0~11 km/h
Max. theoretical traction force	368 kN

Steering	Independent drive of track at both sides to ensure the full power output for pivot steering and steering with load
----------	--

Brake	Regular closed multi-disk brake
-------	---------------------------------

Final drive	Double-reduction final drives of spur gear and planetary gear
-------------	---

CHASSIS SYSTEM

Type	Pivot, equalizing beam suspended type, semirigid structure
Track shoe type	Single grouser
Track gauge	2000 mm
Width of track shoe	560 mm
Track grounding length	3050 mm
Track grounding area	34160 mm
Number of track shoe	41 pcs/ side
Grounding pressure	68,3 kPa
Number of carrier roller	2 pcs/ side
Number of track roller	7 pcs/ side
Pitch	216 mm
Minimum turning radius	4210 mm

REFILL CAPACITY

Fuel capacity	489 L
Coolant liquid capacity	55 L
Engine oil capacity	24 L
Hydraulic oil tank	105 L
Final drive	30L/side
Transfer case	10 L

OPERATING WEIGHT

Machine + ripper	26466 kg
------------------	----------

BLADE

Blade type	Semi-U blade
Blade capacity	6,5 m ³

DIMENSION

A. Machine height (with ROPS)	3335 mm
B. Machine length with ripper	7428 mm
C. Max. lifting height of blade	1247 mm
D. Max. digging depth of blade	540 mm
E. Blade width	3642 mm
F. Blade height	1580 mm
G. Track shoes outside width	2560 mm
Track grouser height	72 mm
Ground clearance	450 mm
Digging angle of blade	55°±3° (deg.)
Max blade tilt height	840 mm

RIPPER

Type	Three shank ripper
Weight	2646 mm
Maximum ripping depth	655 mm
Maximum lifting height	567 mm
Ripper length (at deepest ripping)	1882mm
Ripper length (at highest ripping)	1547 mm
Width	2158 mm
Departure angle (at highest point)	16.35°
Ripping width	2000
Distance between ripper teeth	1000 mm

STANDARD EQUIP

INTEGRATED ROPS

REVERSE BUZZLE

FIRE EXTINGUISHER

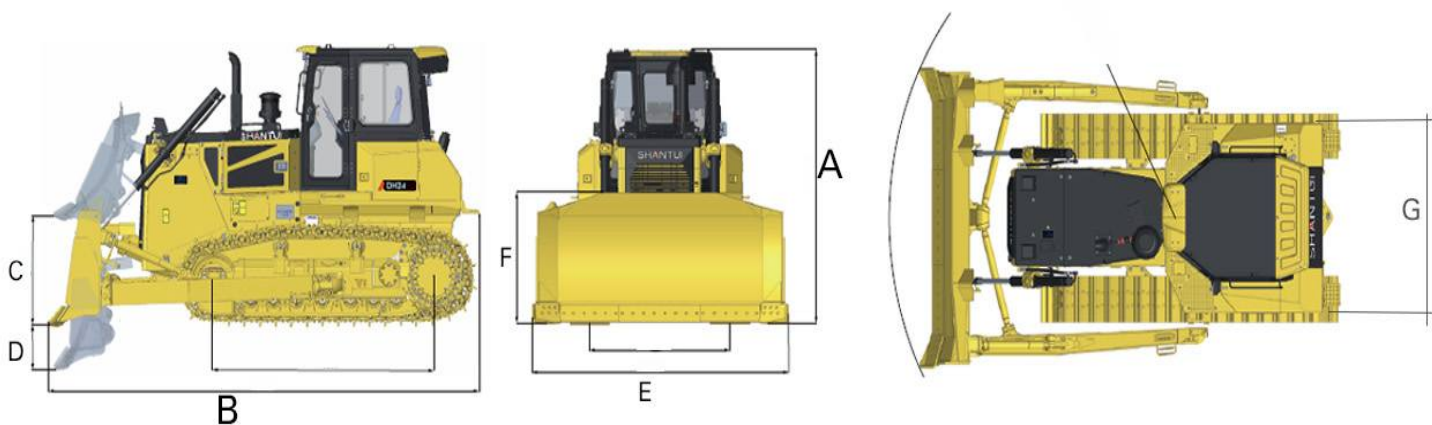
AIR CON

STROBE LIGHT

REFLECTIVE TAPES

CAB FAN

RADIO



* THE SPECIFICATIONS ARE SUBJECT TO CHANGE WITHOUT NOTICE. THE PICTURES MAY INCLUDE OPTIONS. THE ACTUAL COLOR & APPEARANCE OF THE PRODUCT MAY DIFFER FROM WHAT IS SHOWN.

Please note: CTEG(Combined Truck and Equipment Group) reserves the right to make changes to the design, form, colour and specifications of any Shantui brochure without notice. The picture shown is for illustrated purposes only.

CUSTOMER SATISFACTION IS OUR AIM.